



FASO RUSSIA FEDERAL RESEARCH CENTRE
«KOLA SCIENCE CENTRE OF THE RUSSIAN ACADEMY OF SCIENCE»
Institute of North Industrial Ecology Problems

INEP socio-economic studies

Elena Klyuchnikova

*INEP (Institute of Industrial Ecology Problems in the North, Kola Science Center, RAS) & U
HEL-INAR (University of Helsinki, Institute for Atmospheric and Earth System Research)*

12 November 2020



Research directions

Sustainable mining

**Climate change impact on social -
economic system**

**Prediction of future social-economic
development (future narratives
(scenario))**



Sustainable mining Research topics

- 1. Social license to operate (SLO)**
- 2. Environmental regulation (waste management; environment impact assessment; licensing)**
- 3. Conceptualization:**
 - Green economy;**
 - Green growth;**
 - Circular economy**



Sustainable mining Projects and main publications

Development a strategy for minimization mining and metallurgical mining waste impacts on the environment - the state assignment, no. reg .: AAAA-A18-118021490072-9.

Marina Nevskaya, Sergey Seleznev, Vladimir Masloboev, Elena Klyuchnikova, Diminriy Makarov. Involving small and medium-sized mining industry businesses in mining waste processing in the Russian Federation.//Mineral Economics. March, 2020. <https://doi.org/10.1007/s13563-020-00222-7>

SUMILCERE (sustainable mining, local communities and environmental regulation) – Kolarctic 2007-2013

Söderholm K., Söderholm P., Helenius H., Pettersson M., Viklund R., Masloboev V., Mingaleva T., Petrov V. Environmental regulation and competitiveness in the mining industry: Permitting processes with special focus on Finland, Sweden and Russia// [Resources Policy](#). 2015. Vol. 43. P. 130–142.

Nysten-Haarala S., Klyuchnikova E., Helenius H. Law and self-regulation–Substitutes or complements in gaining social acceptance?// [Resources Policy](#). 2015. Vol. 45. P. 52–64.

Koivurova T., Masloboev V. et al. Legal Protection of Sami Traditional Livelihoods from the Adverse Impacts of Mining: A Comparison of the Level of Protection Enjoyed by Sami in Their Four Home States// *Arctic Review on Law and Politics*. 2015. Vol. 1. P. 11–51.

Pettersson M., Oksanen A., Mingaleva T., Petrov V., Masloboev V. License to Mine: A Comparison of the Scope of the Environmental Assessment in Sweden, Finland and Russia// *Natural Resources*, 2015, 6, 237-255

Suopajarvi L., Poelzer G., Ejdemo T., Klyuchnikova E., Korchak E., Nygaard V. Social sustainability in northern mining communities: A study of the European North and Northwest Russia. [Resources Policy](#), 2016, 47, 61–68

Green Growth in the Russian Arctic – NORRUS program 2019-2020



Climate change impacts on the social system

Research topics:

1. Public perception of climate change
2. Adaptation strategy development

Projects and main publications:

Areas of intensive nature management in the Russian Arctic under climate change conditions: natural and social processes in the long term – RFBR, 2018-2021

Рябова Л.А., Ключникова Е.М. Социальные последствия изменения климата в Российской Арктике: изученность проблемы и задачи новых исследований.// Север и рынок: формирование экономического порядка. №3(59), 2018.



Prediction of future social-economic development

Research topics:

1. Future scenarios (narratives) development
2. Global drivers identification

Projects and main publications:

Adaptation Actions for a Changing Arctic, AMAP, 2014-2017

Nilsson Annika E., Bay-Larsen Ingrid, Carlsen Henrik, Bjørkan Maiken, Burmistrov Anatoli, Eklund Niklas, Isaeva Ludmila, Ivanova Ludmila, Kharitonova Galina, Kljuchnikova Elena, Masloboev Vladimir, Pilli-Sihvola Karolina 5. Future narratives // AMAP 2017. Adaptation Actions for a Changing Arctic: Perspectives from the Barents Area. Monitoring and Assessment Programme (AMAP), Oslo, Norway. 2017. P. 109-126. ISBN – 13-978-82-7971-102-5

Nilsson Annika E., Bay-Larsen Ingrid, Carlsen Henrik, Jylhä Kirsti, Klyuchnikova Elena, Masloboev Vladimir, van Oort Bob, and van der Watt Lize-Marié Towards extended shared socioeconomic pathways: A combined bottom- up and top-down methodology with results from the Barents region // *Global environmental changes* 45 (2017) 124-132

Areas of intensive nature management in the Russian Arctic under climate change conditions: natural and social processes in the long term – RFBR, 2018-2021

Global drivers, local consequences: Tools for global change adaptation and sustainable development of industrial and cultural Arctic “hubs” (ArcticHubs), Horizon 2020, 2020 -2024



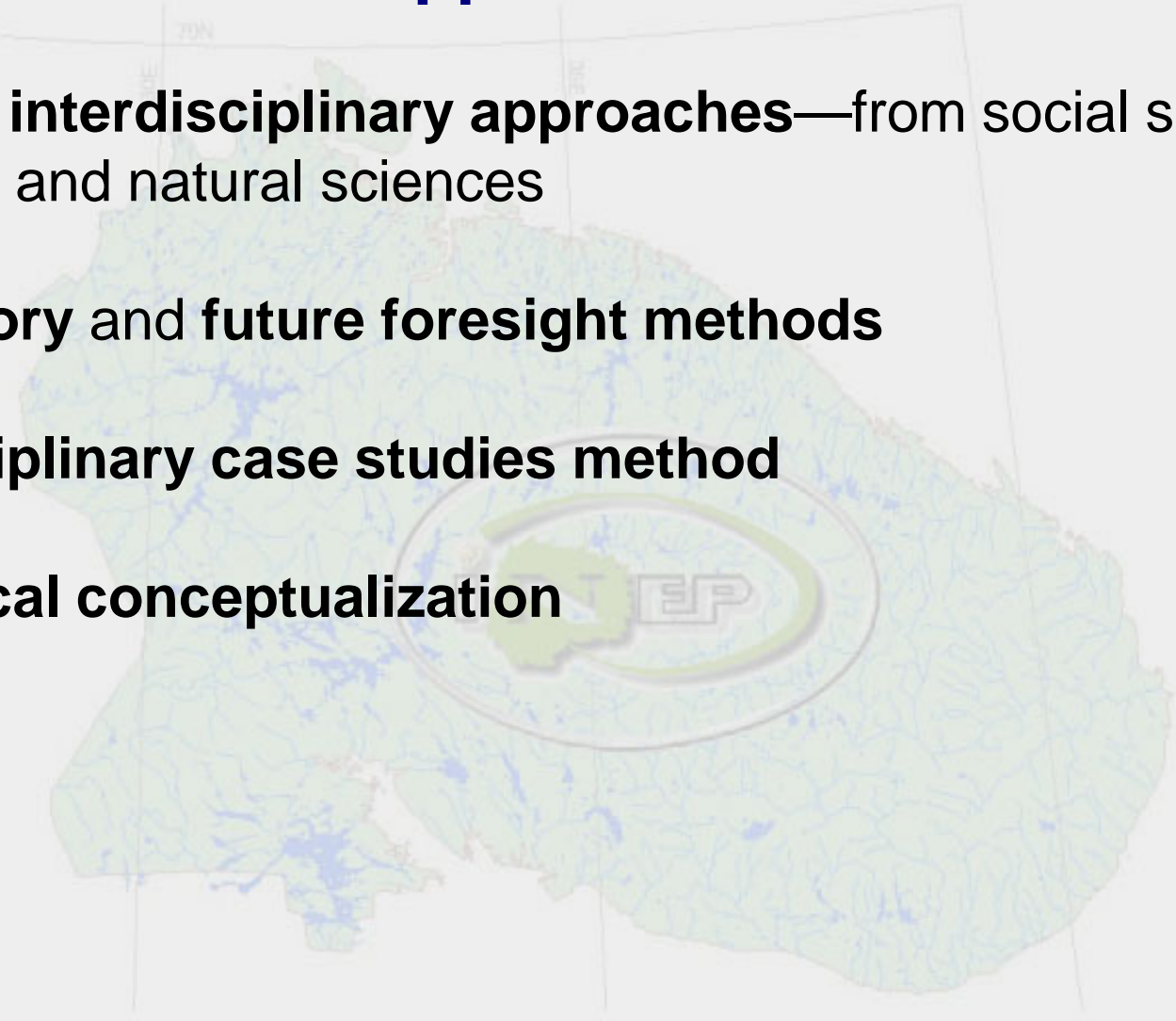
Main methods and approaches

Multi- and interdisciplinary approaches—from social sciences, humanities and natural sciences

Participatory and future foresight methods

Multi-disciplinary case studies method

Sociological conceptualization



Thank you for attention!

